

Rondeau

Partita II BWV826

Johann Sebastian Bach

Arr. by Keiji Sone

Soprano

Alto

Musical notation for Soprano and Alto parts, measures 1-8. The Soprano part begins with a treble clef, a key signature of one flat (B-flat), and a 3/8 time signature. The Alto part begins with a treble clef, a key signature of one flat, and a 3/8 time signature. Both parts feature a melodic line with eighth and sixteenth notes, and a bass line with quarter and eighth notes.

Musical notation for Soprano and Alto parts, measures 9-18. The Soprano part continues with a melodic line, and the Alto part provides a harmonic accompaniment. The notation includes various note values and rests.

Musical notation for Soprano and Alto parts, measures 19-25. The Soprano part features a more complex melodic line with slurs and ties, while the Alto part continues with a steady accompaniment.

Musical notation for Soprano and Alto parts, measures 26-32. The Soprano part has a melodic line with many sixteenth notes, and the Alto part has a bass line with quarter notes.

Musical notation for Soprano and Alto parts, measures 33-42. The Soprano part has a melodic line with eighth notes, and the Alto part has a bass line with quarter notes.

Musical notation for Soprano and Alto parts, measures 43-50. The Soprano part has a melodic line with eighth notes, and the Alto part has a bass line with quarter notes.

Musical notation for Soprano and Alto parts, measures 51-58. The Soprano part has a melodic line with eighth notes, and the Alto part has a bass line with quarter notes.

Rondeau

58 ⁸

65 ⁸

72 ⁸

82 ⁸

89 ⁸

96 ⁸

104 ⁸

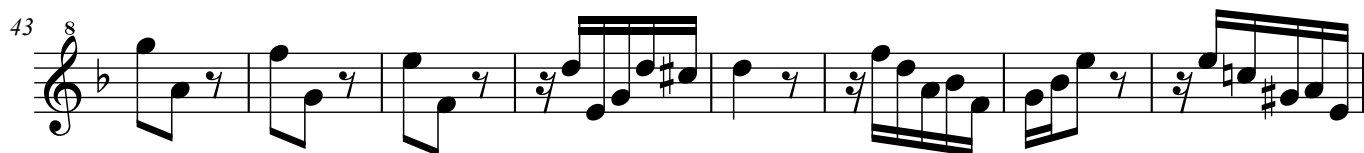
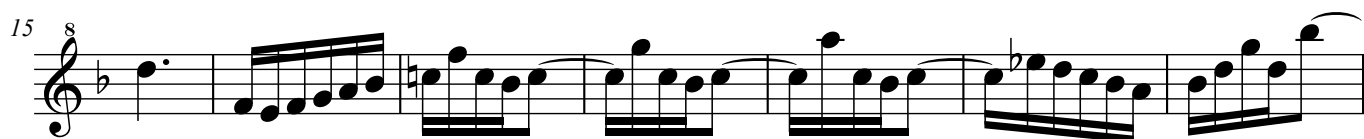
Soprano

Rondeau

Partita II BWV826

Johann Sebastian Bach

Arr. by Keiji Sone



Rondeau Soprano

57 8

63 8

69 8

77 8

85 8

91 8

98 8

104 8

3 3 3 3 3

The image displays a musical score for a soprano part, titled "Rondeau Soprano". The score is written on a single staff in treble clef with a key signature of one flat (B-flat). It consists of eight lines of music, each starting with a measure number and a time signature of 8/8. The first line (measures 57-62) features a rhythmic pattern of eighth notes with a triplet of eighth notes at the end. The second line (measures 63-68) continues with eighth notes and includes a fermata over the final measure. The third line (measures 69-76) shows a mix of eighth and quarter notes with some rests. The fourth line (measures 77-84) includes a triplet of eighth notes and a fermata. The fifth line (measures 85-90) is characterized by a series of triplet eighth notes. The sixth line (measures 91-97) continues with eighth notes and includes a fermata. The seventh line (measures 98-103) features eighth notes with rests. The eighth line (measures 104-109) concludes with eighth notes and a fermata. The page number "- 2 -" is centered at the bottom.

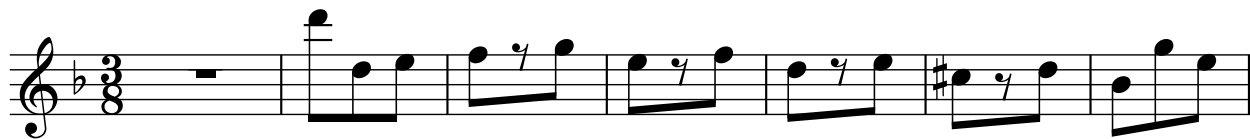
Alto

Rondeau

Partita II BWV826

Johann Sebastian Bach

Arr. by Keiji Sone



Rondeau Alto

