

# Christmas Carols

牧人ひつじを・もろびとこぞりて・神の御子  
荒野の果てに・おめでとうクリスマス・聖夜

Arr. by Keiji Sone

## The First Noel

Musical score for 'The First Noel' featuring Soprano, Alto, Tenor, and Bass staves. The score is in 3/4 time and includes a first ending section. The dynamics are marked *mp*.

Musical score for 'The First Noel' featuring Soprano, Alto, Tenor, and Bass staves. The score is in 3/4 time and includes a first ending section. The dynamics are marked *mp*.

## Joy to the World

Musical score for 'Joy to the World' featuring Soprano, Alto, Tenor, and Bass staves. The score is in 2/4 time and includes a first ending section. The dynamics are marked *mf*.

Christmas Carols

28

1. 2.

*mp*

*mp*

*mp*

*mp*

38 **O Come, All Ye Faithful**

44

51

Christmas Carols

Angels We Have Heard on High

58

mp

mp

mp

mp

This system contains measures 58 through 62. It features four staves: two treble clefs and two bass clefs. The key signature is one sharp (F#). The music is marked with a mezzo-piano (*mp*) dynamic. The melody is primarily in the upper staves, with accompaniment in the lower staves.

63

This system contains measures 63 through 67. The musical notation continues across the four staves, maintaining the same key signature and dynamic. The melody becomes more active in the upper staves, with some sixteenth-note passages.

68

This system contains measures 68 through 72. The musical notation continues across the four staves. The melody in the upper staves features a prominent sixteenth-note run.

73

mf

mf

This system contains measures 73 through 77. The music concludes with a double bar line and repeat signs. The key signature changes to three sharps (F#, C#, G#), and the time signature changes to 3/4. The dynamic is marked mezzo-forte (*mf*). The final measure of the system is a whole note chord.

Christmas Carols

We Wish You a Merry Christmas

79 <sup>s</sup> 1.

*mf*

87 <sup>s</sup> 2. *rall.*

*rall.*

Silent Night

97 <sup>s</sup>

*mp*

103 <sup>s</sup>

Soprano

# Christmas Carols

牧人ひつじを・もろびとこぞりて・神の御子  
荒野の果てに・おめでとうクリスマス・聖夜

Arr. by Keiji Sone

## The First Noel

Musical notation for 'The First Noel' in 3/4 time, starting at measure 8. The piece is marked *mp*. It features a melody with eighth and quarter notes, including a repeat sign with first and second endings. The key signature has one sharp (F#).

## Joy to the World

Musical notation for 'Joy to the World' in 2/4 time, starting at measure 18. The piece is marked *mf*. It features a melody with eighth and quarter notes, including a repeat sign with first and second endings. The key signature has one sharp (F#).

## O Come, All Ye Faithful

Musical notation for 'O Come, All Ye Faithful' in common time (C), starting at measure 38. The piece is marked *mp*. It features a melody with quarter and eighth notes. The key signature has one sharp (F#).

Christmas Carols Soprano

Angels We Have Heard on High

58 *mp*

62

66

70

74 *mf*

We Wish You a Merry Christmas

79

84 1.

91 2. *rall.*

Silent Night

97 *mp*

101

105

Alto

# Christmas Carols

牧人ひつじを・もろびとこぞりて・神の御子  
荒野の果てに・おめでとうクリスマス・聖夜

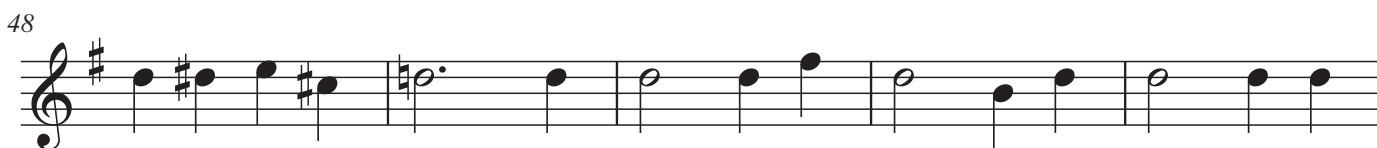
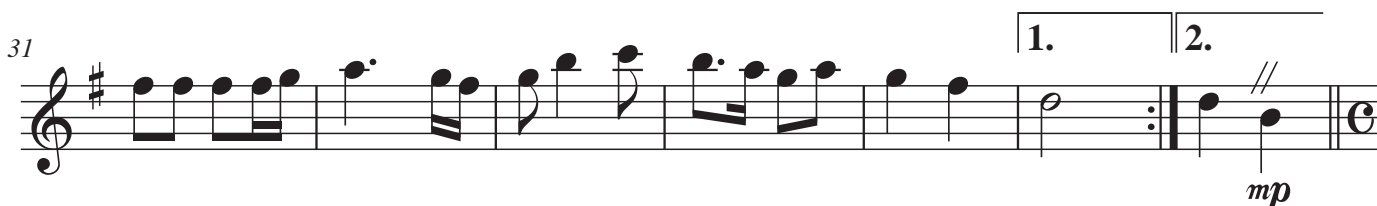
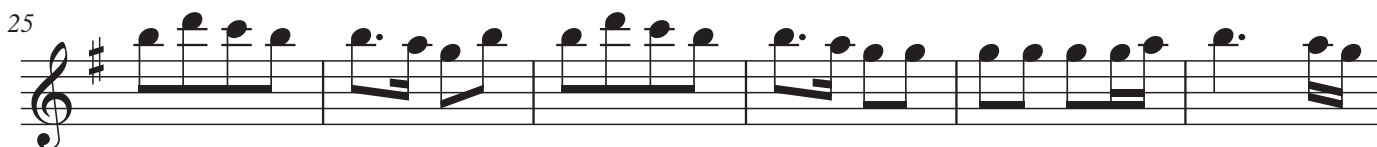
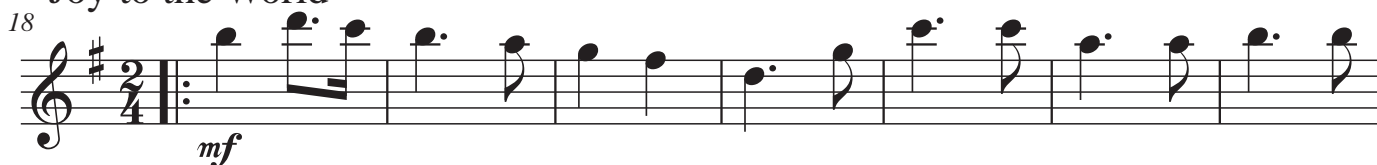
Arr. by Keiji Sone

## The First Noel

*Soprano*



## Joy to the World



Christmas Carols Alto

58 Angels We Have Heard on High

*mp*

*mf*

79 We Wish You a Merry Christmas

*2. rall.*

97 Silent Night

*mp*



Tenor

# Christmas Carols

牧人ひつじを・もろびとこぞりて・神の御子  
荒野の果てに・おめでとうクリスマス・聖夜

Arr. by Keiji Sone

## The First Noel

*Soprano*

6 *mp* 1. 2.

12

## Joy to the World

18 *mf*

25

31 1. 2. *mp*

## O Come, All Ye Faithful

38

43

48

53

Christmas Carols Tenor

Angels We Have Heard on High

58 *mp*

62

67

72 *Soprano*

We Wish You a Merry Christmas

79 *mf*

84 1.

90 2. *rall.*

Silent Night

97 *mp*

101

105

# Christmas Carols

Bass

牧人ひつじを・もろびとこぞりて・神の御子  
荒野の果てに・おめでとうクリスマス・聖夜

Arr. by Keiji Sone

## The First Noel

Soprano



Christmas Carols Bass

Angels We Have Heard on High

58 *mp*

62

67

73 *Sop. 8va*

We Wish You a Merry Christmas

79 *mf*

84 1.

90 2. *rall.*

Silent Night

97 *mp*

101

105